

# LEADING ARCHITECTURE

A N D D E S I G N

LAD

November/December 2005 • R35,00 incl. VAT

The 11<sup>th</sup> Year  
The 11<sup>th</sup> Hour?

PICA  
2005  
WINNER



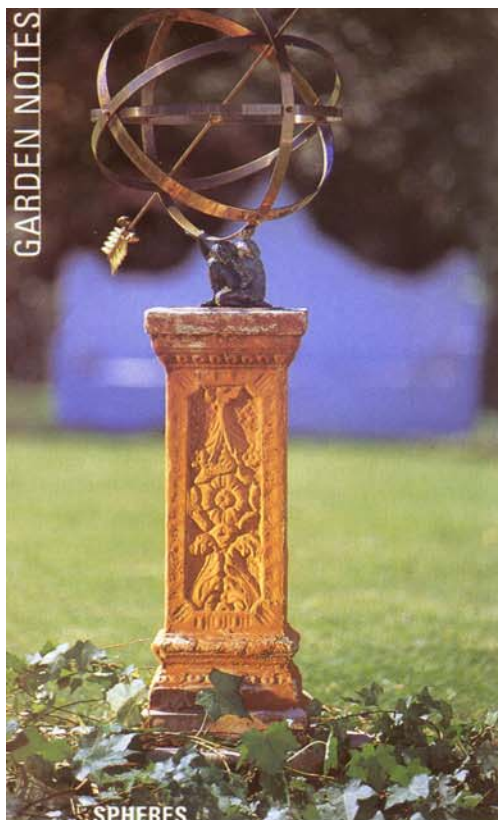






drawing board ■





SPHERES

Create a new focal point in your garden with a sundial or armillary sphere from Sundials Exclusive, ☎ (021) 712-8402. To see more of their range visit [www.sundialsexclusive.com](http://www.sundialsexclusive.com).

**STEELING AWAY** Craig and Angela Bax of the KwaZulu-Natal company Signsation have moved into producing and marketing this season's most durable high-quality pots. Their planters are made of 2mm-thick steel, which has been laser cut and welded. 'We supply the pots in a rusted finish with a clear matt varnish to seal the rust effect. We can also paint the pots any colour required,' says Angela. Ideal for haworthia or echeveria. For further information call ☎ (031) 700-6565, or e-mail [info@signsation.com](mailto:info@signsation.com). Or visit [www.signsation.com](http://www.signsation.com) to view their portfolio.



**BALM FOR WINTER** Getting down to earth is tough on hands. Try these products from Crabtree & Evelyn's Gardeners range: Outdoor Burnsticks, R200 for 10; After Work Scrub Grains, R125 for 142g; Hand Scrub with Pumice (in wicker basket), R250 for 350g. Call ☎ (011) 883-6158; (021) 425-2634.

**BOTANY MEETS POETRY** Sarah Maguire's *Flora Poetica* (Chatto & Windus; R235) is something special. She was poet-in-residence at the Chelsea Physic Garden and has put together a compelling selection of poems inspired by plants.



# Winter Pleasures

New garden shops, faux topiary, how to get rose pruning right, contemporary planters in steel ... it's all here



**TALKING SHOP** Le Citron Bleu, ☎ (021) 423-3265, opened recently in Park Road, Cape Town. With Gallic savoir-faire, it features the work of Tobias de Haas and Corinne Taylor. This brother-and-sister team works from their Kleinmond studio, where they specialise in making quality terracotta and glazed ware using traditional methods. The scale of the pots ranges from tiny succulent pots to giant urns and olive jars.

## WINTER PRUNING DEMONSTRATIONS

• Rose pruning demonstrations will be held on Saturday 6 July and Sunday 7 July at Ludwig's Roses outside Pretoria, ☎ (012) 544-0144. Ludwig Taschner will demonstrate how to prune roses and give advice on how to spray and prepare roses for spring • Duncan's Roses in Elgin, Cape, will have a pruning demonstration in the nursery at Peregrine Farmstall, ☎ (021) 848-9146, on 13 July and another at the nursery on the farm, ☎ (021) 848-9949, on 20 July.

**INDOOR TOPIARY** Andrea Semple's artificial topiaries are shaped from treated indigenous foliage in green, grey, silver and plum, and are on display at the Cape Grace, The Table Bay Hotel and Mount Nelson Hotel in Cape Town. Kept out of direct sunlight they'll last forever. You'll find her faux topiaries and other whimsical foliage shapes at Bygones Antiques & Summer House, ☎ (021) 794-5489, L'Orangerie, ☎ (021) 674-4284, Tamarind, ☎ (021) 552-0049, and Fellowes Interiors, ☎ (021) 419-5555, or call Andrea on ☎ (082) 658-5744.





Far left The greenhouse effect – Obligato's dynamic plant containers. Left Decorator Stephen Falcke's French-style stand. Below Ten contemporary chairs showcasing the best of local tribal design were stylishly put together by CSIR M&MTek.



Above World of Interiors' new range of kitchenware is sleek and contemporary, and it's manufactured right here in SA.

Right The House and Leisure/ Bright House stand was a display of interior-external flow, where typically outdoor furnishings and accessories were used indoors.

Below Mosaics from Mosaic Inc.



### WE LOVED...

- Lientjie Wessels' theatrical and whimsical stand for Plascon – it got our vote, and the show's, for best stand.
- The Michael Hogan Design Corporation's lime green chairs in his colourful, dramatic room in the SAGID house.
- Mosaic Inc's feast of brightly coloured mosaics all around us.

- Haldane Martin's sleek and superbly crafted contemporary tables and chairs.
- Haute-Zone's colourful ostrich skins.
- Stephen Falcke's shuttered French boudoir.
- LOSA's range of British-designed objects created in KwaZulu-Natal.
- Morso's new fuel-efficient, easy-to-clean range of braais.
- The new kitchens from World of Interiors.

- The talent of the students at Pretoria Technikon – the future looks bright.

### GRIPES

- We're still looking for more contemporary African design. It's emerging a bit too slowly for our liking. Come on, all aspiring designers.
- Isn't it about time someone redecorated the ghastly, depressing, airport-style green café in Gallagher Estate? ☐



# Deco™

IN THIS ISSUE

## Paint your wagon! **PAGE 9**

Make your car stand out and avoid becoming another statistic.

## BEV OLIVIER'S **MAGNIFICENT HOME** **3**

**obbligato** the gurus of style



## **METAL PAINT TECHNIQUES**



Imagine this heavy duty hurricane lamp at your front door, or strategically placed in the garden.



Masters of garden decor in a range of metal finishes from rust to bronze and steel, obbligato is just so sought after and so stylish. Take inspiration from these fabulous finishes and unusual shapes. Garden decor has come a long, long way.

obbligato (031) 700 65  
www.obbligato.co



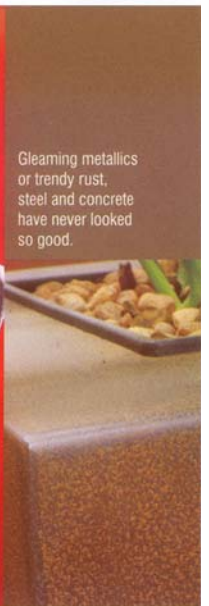
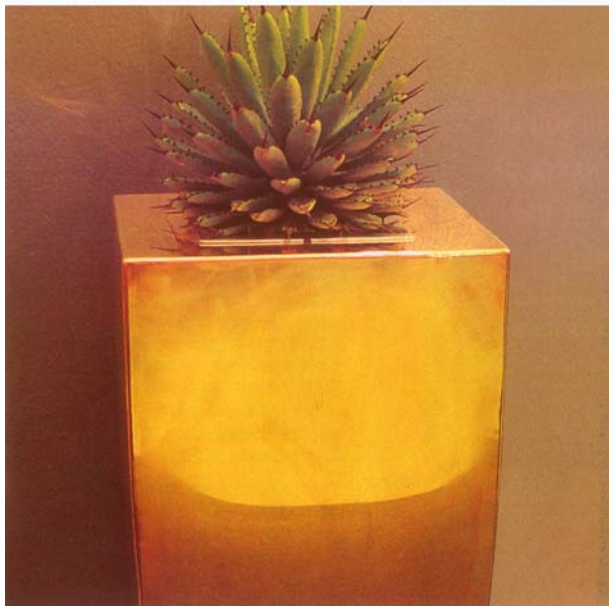
### Mirrors, according to feng shui, are essential in warding off negative energy....

From a decor point of view mirrors have the great benefit of making a smaller room look more spacious, and bringing light to dark rooms. Mirrors to suit all kinds of decor are available nowadays - sometimes at a price though, so try using paint techniques to glamourise old framed mirrors, the possibilities are endless and the rewards great! Did you know that the typical mirror is a sheet of glass that is coated on its back with aluminum or silver and produces images by reflection? The first mirrors, throughout the European Middle Ages were simply slightly convex disks of metal, either bronze, tin, or silver, that reflected light off their highly polished surfaces. A method of backing a plate of flat glass with a thin sheet of reflecting metal came into widespread production in Venice during the 16th century; an amalgam of tin and mercury was the metal used. Present-day mirrors are made by sputtering a thin layer of molten aluminum or silver onto the back of a plate of glass in a vacuum.



*Mirror Mirror on*





Gleaming metallics or trendy rust, steel and concrete have never looked so good.



If you want to make your own unique frames and need some creative inspiration, speak to artist Elaine Matthews (left), from the Morningside Fine Art Academy who runs courses in making frames using papier mache and other unusual materials. Call her in Durban at (031)312 3523 to find out when her next course is.



# A V A R I C E

---

Outrageously expensive and unnecessarily extravagant  
or that perfect finishing touch for your home?



## Lifestyle for plants

You've pruned the hedge to within a twig of its life, mowed the lawn in cricket stripes and combed the feathers of birds fortunate enough to be passing through your air space. But here's how to really flaunt your style, status and general good taste to the neighbours. Pitch one of these babies, from South African company Obbligato's range of plant pots and garden furniture, out on the front path and let them weep (the neighbours that is, not the plants). Any living thing would, after all be proud to bloom amidst such Perspex splendour, a low maintenance stainless steel insert holding plants within the colourful casing. This deluxe planter comes in many colours including yellow, green, orange, maroon and clear (smoked), other finishes available on request. However do try not to dazzle those dapper little birds with your bright ideas.

Available from a selected list of retailers in the UK. (plant pots come in four sizes with prices from around £415 – £825). For details visit [www.obbligato.co.za](http://www.obbligato.co.za)



# Get into Shape

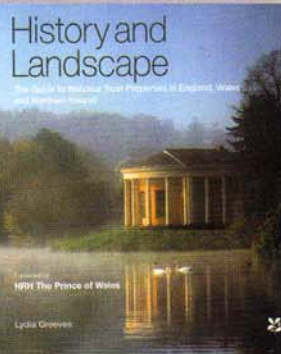
It might be winter but July is the time to prune, plan and read up on garden trends

**T**his month's tips: don't procrastinate on pruning, get a head start on topiary and remember that clever foliage choices give you 'boom without bloom'.

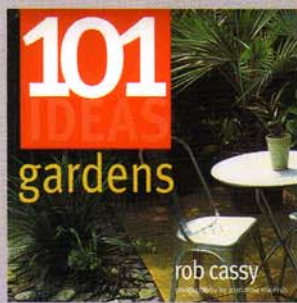


**FERN FILE** The fern collection surrounding Colonel Bird's Bath (built in 1811) at Kirstenbosch National Botanical Gardens will convince you there's life beyond sword ferns for the wet shady zones of the garden. Look out for the South African tree fern (*Cyathea dregei*), maidenhair ferns and mountain blechnum.

**BOOKS** Lydia Greaves' **HISTORY AND LANDSCAPE** (National Trust; R447) is full of stately English homes and landscapes to daydream about (your secret life as Capability Brown). Useful only if you're planning to tour Britain. Available from Kalahari.net.



**101 IDEAS: GARDENS** (Quadrille; R158.95) is all about solutions for comfortable garden seating, unobtrusive lighting or boundary issues. Ideal for urban gardeners who need to get practical. Available from Kalahari.net.



## GET SPOTTED

Play in the rain in these polka-dot gumboots in red or green, R395 per pair, L'Orangerie.



## UP THE SPOUT

Old-fashioned imported European watering can, R395, from L'Orangerie.

## GROW YOUR OWN...

simple spherical topiary. Obbligato's fibreglass 'bubble' plant pot, from R670 including frame, comes painted to any colour specification. Try small-leaved myrtle - it grows more quickly than box.



WHERE TO FIND IT PAGE 150

## OUTDOORS DIARY

- **Ludwig Taschner's winter rose-pruning demonstrations**, 1-2 July, 10.30am at Ludwig's Rose Farm, Pretoria, ☎ (012) 544-0144. In Johannesburg: 8 July, 10.30am, and 9 July, 2pm, Ludwig's Roses Egoli, ☎ (011) 608-4166.
- **The Succulent Society Winter Show**, 2-3 July, Walter Sisulu National Botanical Gardens. Call Maddy ☎ (082) 336-3042.
- **Kirstenbosch Biennale 2006**, 5-17 September. Botanical artists are invited to submit four artworks (two of which must be for sale) to Kirstenbosch National Botanical Garden by 17 July. Registration fee is R100. Call Collette ☎ (021) 799-8756, or e-mail botart@sanbi.org.

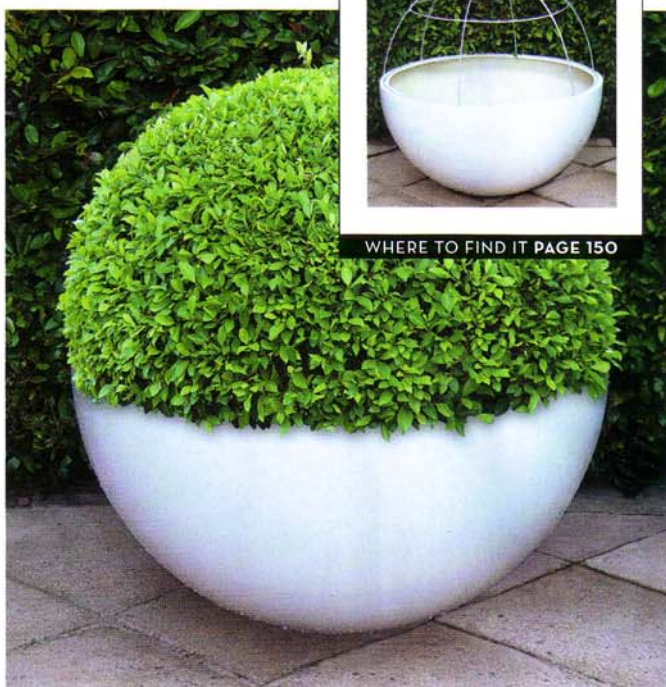
■ **The Aloe Festival**, 22-24 July, Witkoppen Wildflower Nursery. Lectures by aloe expert Leo Thamm. Call ☎ (011) 705-2703.

■ **Queensburgh Orchid Club's annual orchid show**, 30-31 July, Mistralls Hall, Durban. Cost is R5. Call John ☎ (031) 708-3497.

■ **Garden World & First National Bank's 'Delightful Living Ideas' Spring Festival**, 28 July - 3 September. Award-winning show gardens, workshops and floral displays. Call ☎ (011) 957-2545; www.gardenworld.co.za.



Salvia from Garden World





Clean lines and clutter-free zones have given these two Durban homes a feeling of space beyond

TEXT BY COBA KODELITSCH, PHOTOGRAPHS BY PATRICK ROYAL

## A Lightness of Being

Light, air, spaciousness and panache are elements that feature strongly in Odette and Peter Uys' home.

They had very definite ideas about how they wanted their home to look and approached architect Nick Proome to put their design on paper.

It is a contemporary home with screeded cement floors, large windows, open-tread stairs with aluminium railings and low-voltage downlighters on suspended wire to augment the recessed light fittings. The windows in the living areas are bare of any treatment to make the most of the uninterrupted views of the Indian Ocean.

The inner core of the house is an airy double volume space with the landing to the bedrooms situated to one side. The kitchen is almost an extension of the dining room, demarcated by a preparation island with the cooker behind.

Furniture designed by Odette, is simple, clean-lined and void of any superfluous frills and fads. The dining room table has two benches on either side plus two carvers. A dramatic black and white photograph of the sea by Bruce Mortimer has pride of place on a black easel in a corner where the wedge-shaped staircase turns to lead upstairs.

Colours are predominantly muted with bright accents to lend interest. ▶

1. An over-sized aluminium pot from Obligato forms an elegant focal point at the end of the passage. A narrow window (not seen) allows light to spill over the plant.

2. The corner seating unit is upholstered in Gralan 'Chamois Suede' (Brown) coordinating well with the Nguni hide on the floor and scatter cushions in pumpkin orange and luminous green adding in a touch of colour.





# Plants on the Patio

By Janet Peace

South Africa is blessed with wonderful weather and we are lucky enough to be able to spend most of our time outdoors. It is for this reason that the patio has become an increasingly popular space in many homes, the bridge between your indoor space and the outside.

**T**he patio is an indoor/outdoor room. Your own personal décor style should flow from your living room, outside onto your patio. If your home is decorated in a contemporary style, the furnishings and décor elements on your patio should reflect your trendy tastes. If your style is minimal, maintain the pared down look. If your home is decorated with bohemian flair, ensure that your patio colour scheme and fabric choices bring your zany style outdoors as well.

The secret to linking the indoors with the outdoors on your patio is to bring plants into the area. If the area does not receive direct sunlight then select plants from the indoor pot plant section at your nursery. If it is north-facing, it will probably receive a few hours of sun a day, which means that you will need plants which

would normally be planted out in the garden. The choices are diverse.

When making your selection, consider the plant. Indoor plants will need low, medium or high light. If your patio receives no bright light (or if it is on the south side of the house), select low light plants (see right). If it is in bright light for a few hours a day (east or west-facing), select medium light plants. A patio that has bright light most of the day is likely to be north-facing and only plants for high light will thrive. Alternatively, select attractive outdoor plant specimens, and plant them in beautiful containers.

Lastly, remember that plants on a patio need extra care. Subjected to draughts or warm weather, they tend to dry out faster than plants indoors or plants in the ground. Feed them and inspect them for parasites regularly, so that they will always be at their best.

## Indoor plants for low light

Spathiphyllum  
Zamioculcas  
Dieffenbachia  
Bromeliads

## Indoor plants for medium light

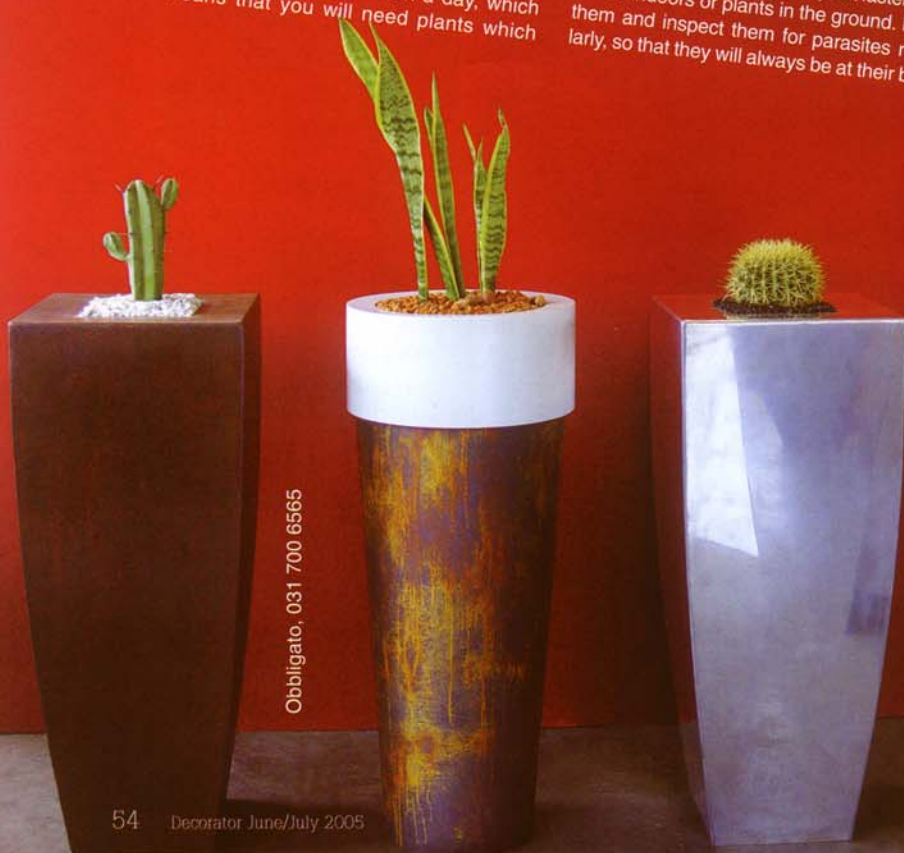
Peperomia  
Nephrolepis  
Anthurium  
Aglaonoma  
Azalea

## Indoor plants for high light

Yucca  
Chrysanthemum  
Ficus benjamina  
Begonia  
Amaryllis  
Kalanchoe

## Outdoor plants suitable for the patio (in the sun)

Osteospermum  
Clivia  
Plumbago  
Fuchsia  
Solanum  
Jasmine  
Wax plant  
Cuphea  
Roses



Obbligato, 031 700 6565

Beautiful hand crafted pots  
brighten your patio  
Bring the indoors out, with pots  
that would look at home in any  
room in the house  
These beautiful glazed pots make  
a stunning contemporary  
statement on the patio

Plants available from nurseries and garden centres.

Plant information supplied by Plantimex, leading distributors of indoor plants





#### Mosaic Studio

Raksha Gobardan Fine Art graduates  
Zama Dunywa Fine Art graduates  
Nandi Baduza Architecture student  
Richard Masoka, Patrick Xulu  
Elias Lukhosi & Sfiso Mbuyazi

# More than the sum of its parts

There's the saying that things are worth more than the sum of their parts, and when that thing is a mosaic by Jane du Rand, that saying is more than true.

Jane's finished works are spellbinding at first glance – the colours, the textures, the composition – and then you step nearer. And you realise that each work is made of thousands of tiny individual pieces – each perfect in itself, each intricately detailed, each telling its own story – teeming with new ideas and new things to see, the more you look and the closer you get.

Jane makes mosaics with almost anything, individually hand-crafted miniature sculptural forms, stones, shells, beads, tiles, mirrors, reflectors and even broken crockery are used to create works laden with meaning and intricate attention to detail.

It's perhaps this attention to detail that makes Jane one of the most renowned mosaic artists in South Africa, and one whose work is full of the flavours of the African environment. A colossal work for a prestigious seaside hotel in Durban is made of thousands of tiny hand-sculpted shells that echo those found on nearby beaches. Friendly insects and other tiny creatures scuttle across columns and into the hall where little hands can explore them at a preschool. An external fireplace overlooking Plettenberg Bay is mosaiced in tiny shapes reminiscent of the pebbles that run naturally down to the sea. Look beyond a garden in Parys to where the thorn trees grow, and then see copies of their tiny leaves shimmering on a mural on the verandah. A huge urn inspired by Jane's love for aloes, is adorned with medallions, each featuring different aspects of our indigenous aloe heritage.

But it's not only her subject matter that reflects our surroundings. Many of Jane's mosaics are destined to spend their days outdoors, and so they meet the environment that they reflect, and enter the long relationship of weathering and being weathered by our climate. Touched, not just by passing hands, but by wind, rain and sun, each passer-by adds fresh life

to mosaic. Wet tiles glisten, drops form patterns on already patterned surfaces, lights change and reflect other images, and each person who runs their fingers across a work, or simply looks at it, reacts individually.

And a common reaction is laughter. For, after being impressed by the skill and beauty of each work, it's often impossible not to laugh – if you look carefully. Like Jane, her works are totally unpretentious, and while many pieces are rich with wit, the visual and verbal puns weave quietly among the dimensions of shape and colour.

"I am passionate about colour and texture," Jane explains – needlessly. For just looking at the number of different shades of blues and greens in one work, it is clear that a very skilled eye for colour has gone into choosing these hues. In fact, Jane gets her glazes mixed specifically – and has so many different shades of green that the mixer has taken to naming them after members of Jane's family.

And family is something very dear to Jane's heart. As I interviewed her at her new home, I asked what her dream was. "To be able to sit on this lawn, working on a design, while my little daughter, Emily, runs around near me." Sure enough, while we sat on the lawn, her daughter ran around.

Work is probably the wrong word for what Jane does. "I enjoy it so much, it feels like one relaxed, happy, perpetual holiday – well usually!" she smiles. Jane's husband, architect Eerhard Huizinga, who also has his studio at the home, makes the picture complete. And Jane's dreams for this new home? – "An eclectic collection of things! something lived in and worn, that grows with us, and reflects who we are – rather like the pieces of a mosaic!"

Jane is serious when she talks pieces – "it's mad and insane", she laughs about her impulse to hand-make and fire most



